

# SS4A and Countywide Local Road Safety Plans in the SJTPO Region

New Jersey Safe Streets and Roads for All (SS4A) Webinar  
Thursday, June 1, 2023, 10:00 am



South Jersey  
Transportation  
Planning Organization

[www.SJTPO.org](http://www.SJTPO.org)

# Chestnut Avenue (Vineland) – Funded by SS4A!

---

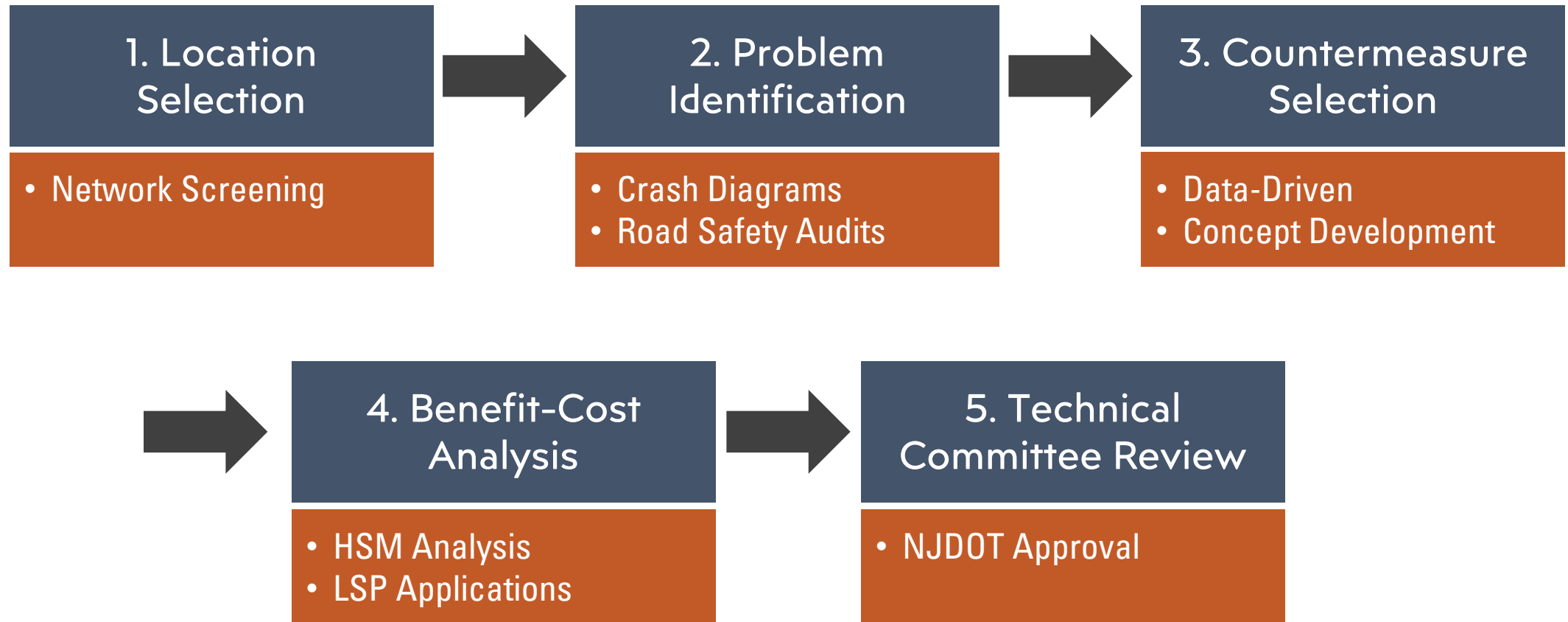


## New Jersey Grant Recipients

- **City of Vineland - \$20M**
- Atlantic City - \$400K
- Cape May City - \$200K
- Monmouth County - \$1.18M
- Hudson County - \$480K
- Union County - \$700K
- Medford Township - \$200K
- City of Paterson - \$400K
- Essex County - \$400K
- NJSEA - \$880K

# Cumberland County Bike/Ped Safety Action Plan

---

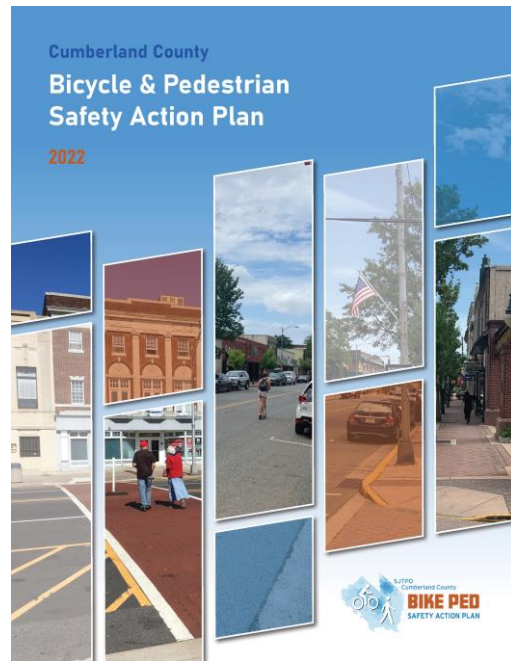


# Cumberland County Bike/Ped Safety Action Plan

---

## RESULTS

- Every Project Funded!
- Over \$32 Million
- Over 7 Miles of Urban Corridors



## LESSONS LEARNED

- Have a Plan
  - Data-Driven
  - Project-Oriented
- Subject Matter Experts
- Concepts in Hand
- Application Support

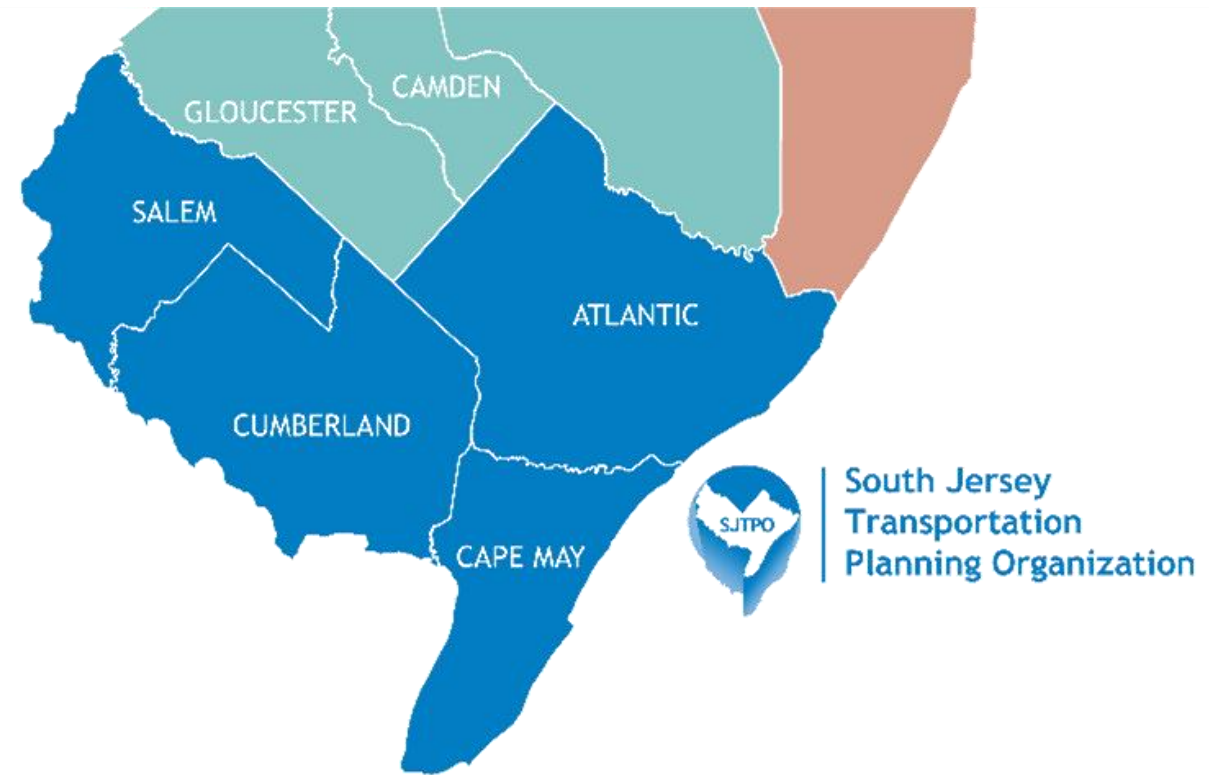


---

**Safety Improvements & Funding!**

# Countywide Local Road Safety Plans Underway

- Atlantic, Cape May, Cumberland, Salem
- County + Municipal = Countywide
- Safe System Approach
- Extensive Data Collection



# Why a Local Road Safety Plan (LRSP)?

---

- Funding Opportunities
- Proven Safety Countermeasure
- Local Roads – Most FSI Crashes

## LRSP Results

↓ **25%**

County road fatalities in  
Minnesota.

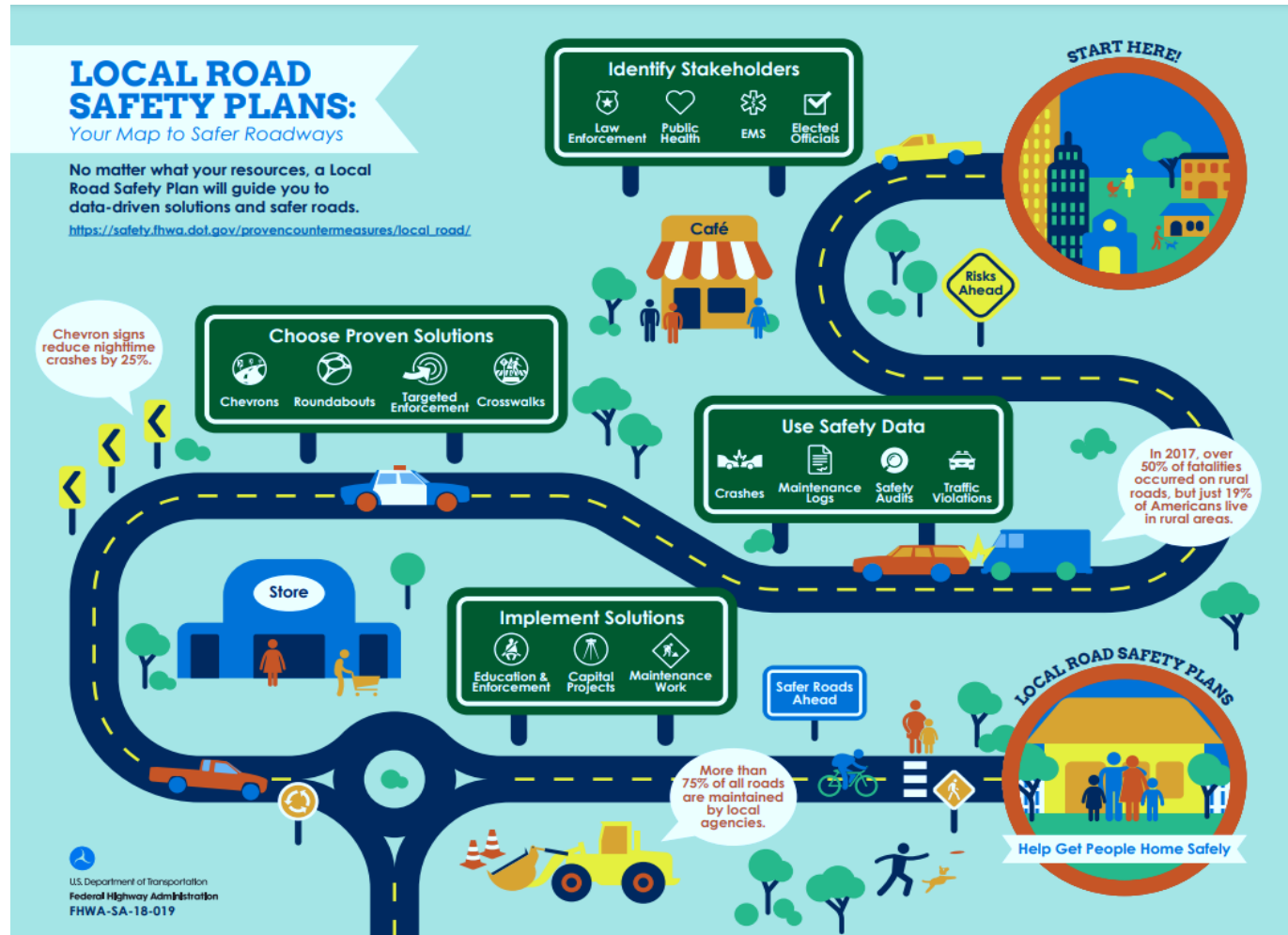
↓ **35%**

Severe curve crashes in  
Thurston County, WA.

↓ **17%**

Fatal and serious injury crashes  
on county-owned roads in WA.

# What is a Local Road Safety Plan (LRSP)?



Source: FHWA LRSP DIY Website <https://safety.fhwa.dot.gov/LRSPDIY/#>

- 5-year actionable plan
- Prioritized list of issues, risks, actions, and improvements
- Locally coordinated and owned
- Strategies encompass 5 Es
- Living document
- Opportunity

# Local Road Safety Plan (LRSP) Approach

---

## Investment Strategy

### Systemic Approach

- Proactive
- Focuses on Mitigating Risk
- Widespread, Low-Cost Countermeasures
- Network View

### Hotspot Approach

- Reactive
- Focuses on Mitigating Past Crashes
- Location Specific Countermeasures
- Site Specific BCA





# LRSP Data Collection

---

- **Segments / Corridors**

- Bi-directional traffic volumes
- Number of lanes
- Lane width
- Shoulder type
- Shoulder width
- Curvature
- Sidewalk presence
- Roadway Lighting

- **Intersections**

- Control type (signalized/unsignalized)
- Number of approaches

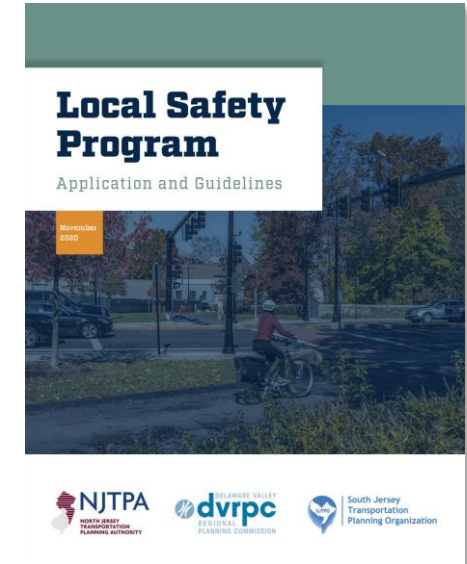
- Approach configurations (turn lanes, # of through lanes)
- Total intersection approach width
- Intersection lighting
- Crosswalk presence
- Major/minor pedestrian crossing distance

- **Both**

- Posted speed
- Access points
- Median presence/type
- Area type (urban/rural)

# Implementation / Assistance

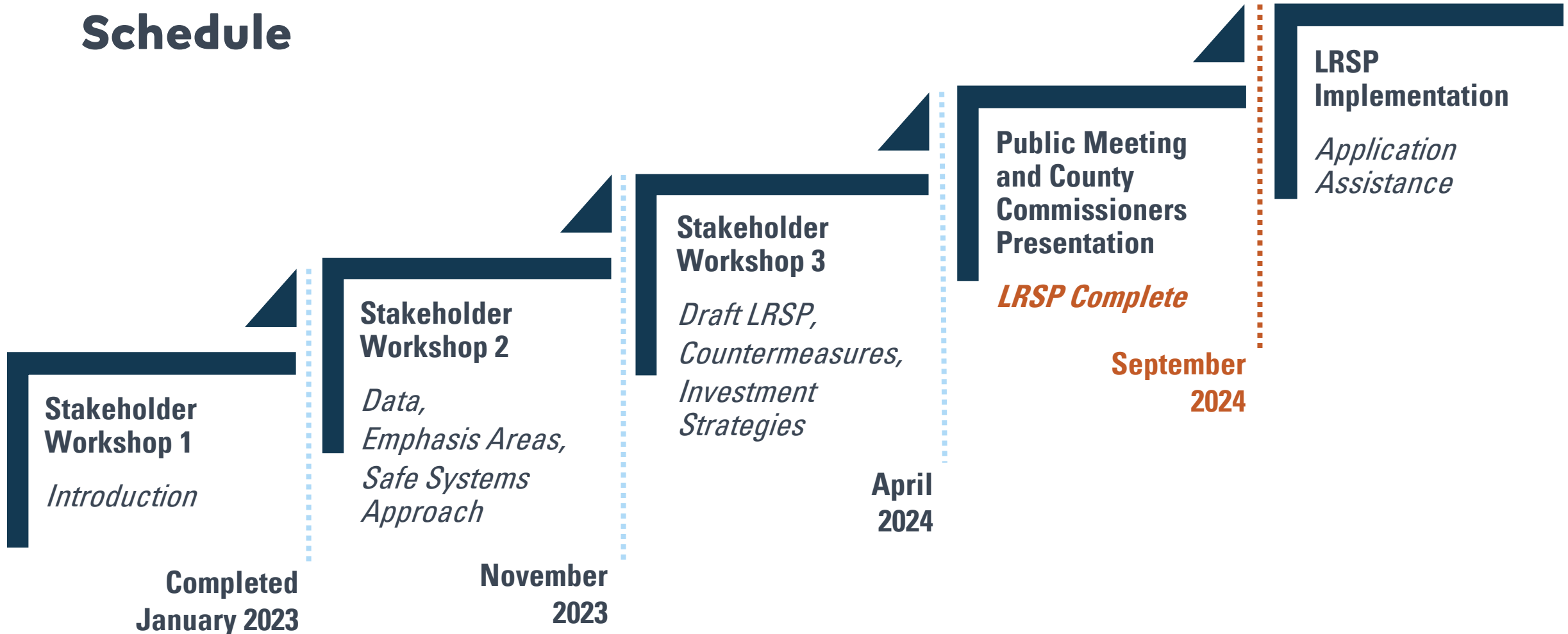
- Lesson learned through the Cumberland Co Bike/Ped Safety Action Plan
- Local Safety Program Applications
  - Crash diagrams
  - HSM analysis
  - Environmental screening
  - Concept drawings
  - Cost estimates
- SS4A Applications
- Other applications / support
  - Must be safety focused!



S | S  
— | —  
4 | A

# Local Road Safety Plan (LRSP) Approach

## Schedule



# Thank You!

---



**Alan Huff** (he/him/his)

Program Manager  
Safety Initiatives & Public Outreach

**ahuff@sjtpo.org**

---

Cumberland Co. Bike/Ped Safety Action Plan

**[www.SJTPO.org/CumberlandSAP](http://www.SJTPO.org/CumberlandSAP)**

Local Safety Program

**[www.SJTPO.org/HSIP](http://www.SJTPO.org/HSIP)**

Countywide Local Road Safety Plans

**[www.SafeRoadsSouthJersey.com](http://www.SafeRoadsSouthJersey.com)**